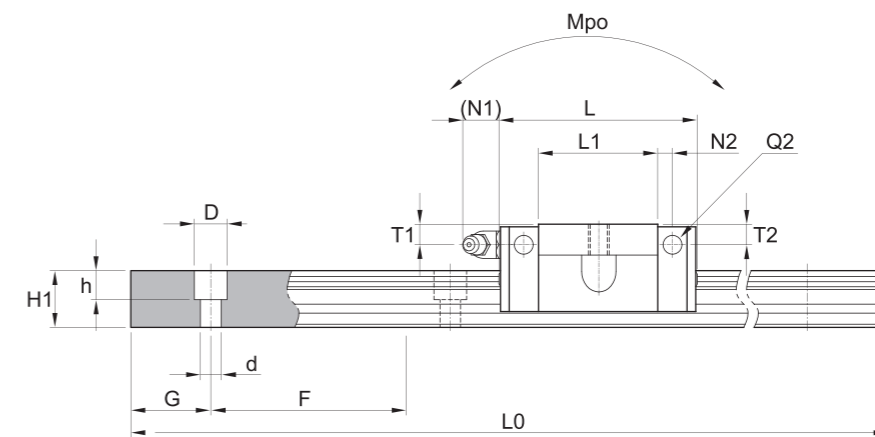
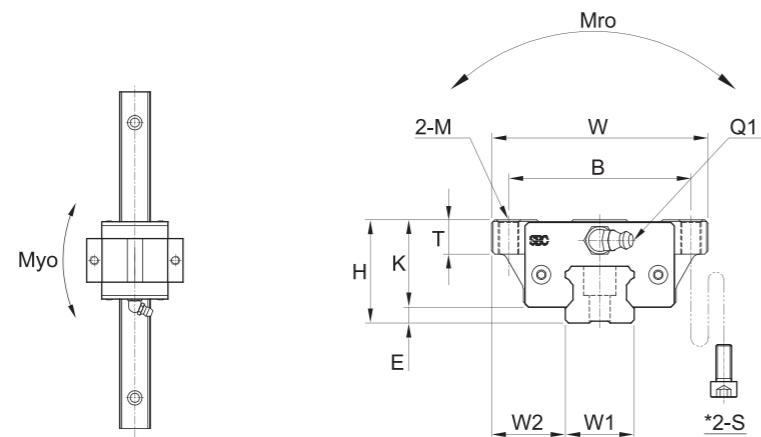


SBI-FV



(单位Unit : mm)

型号 Model	安装尺寸 Mounting dimension				滑块尺寸 Block dimensions											
	H	W	L	E	安装螺纹孔 Mounting tap hole			L1	T	K	注油部件 Grease fitting					
					B	M	*S				T1	N1	T2	N2	Q1	*Q2
SBI15 FV	24	47	39.9	3	38	M5	M4	21.3	8.8	21	4.5	5.5	3.8	3.4	M4x0.7	Ø3.5
SBI20 FV	28	63	49.1	4.5	53	M6	M5	27.1	8	23.4	4.8	12	4	5	M6x0.75	Ø3.5
SBI25 FV	33	70	52.6	5.5	57	M8	M6	30.6	9	27.5	5.4	12	5.4	5	M6x0.75	Ø3.5

导轨尺寸 Rail dimension										基本额定载荷 Basic load rating [kN]		容许静力矩 Permissible static moment [kN·m]			质量 Mass	
W1	W2	H1	F	螺栓孔 Bolt hole			G	导轨最大长度 Max length of rail L0	C	Co	Mro	Mpo	Myo	滑块 Block [kg]	导轨 Rail [kg/m]	
				d	D	h										
15	16	13	60	4.5	7.5	5.5	20	3000	5.8	12.8	0.04	0.03	0.03	0.10	1.3	
20	21.5	16.5	60	6	9.5	8.5	20	4000	9.4	20.2	0.12	0.10	0.10	0.24	2.2	
23	23.5	20	60	7	11	9	20	4000	12.4	26.1	0.19	0.17	0.17	0.37	3	

① C (基本额定动载荷), Co (基本额定静载荷)

C (Basic dynamic load rating), Co (Basic static load rating)

② *S: 底部安装型滑块的螺栓尺寸。

*S: Bolt size for bottom mounting type of block.

③ *Q2: 侧面注油部件的注入孔未留, 以防止异物进入导轨系统内部。

在您订购侧面注油部件时, 我们会自行开孔。

*Q2: The hole of side grease nipple is not made to prevent a foreign substance from going into inside.
When you order the side grease nipple, we build it by ourselves.